

"FR" & "FD" Forced Draft Horizontal Oil-Fired Boilers



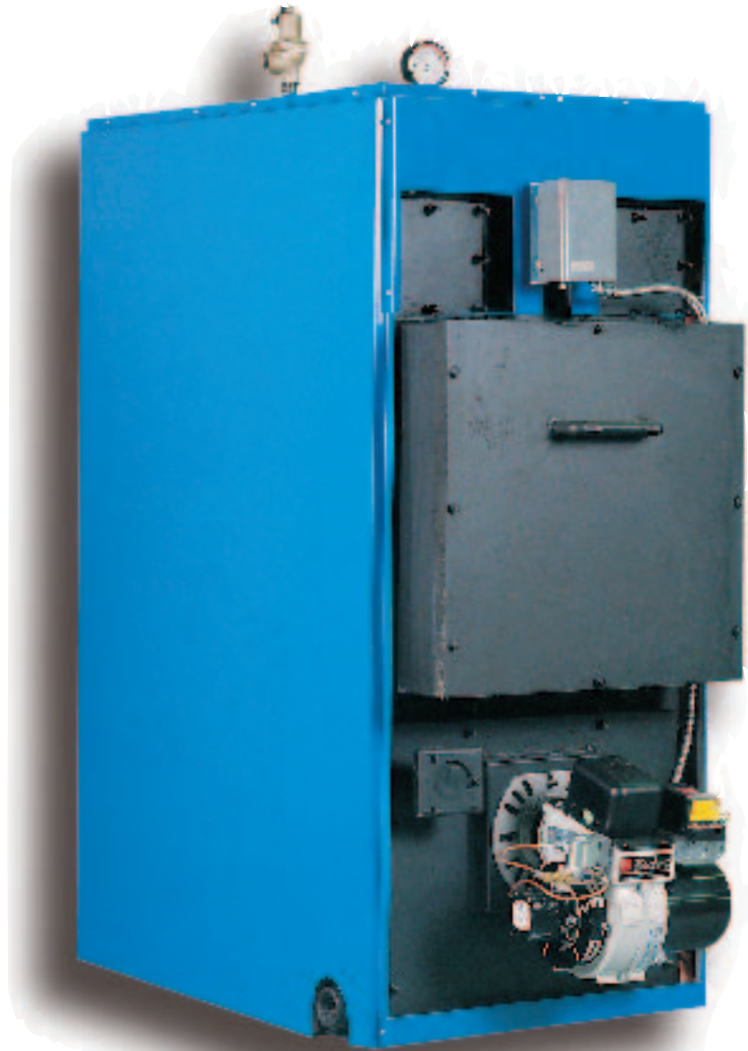
FORCED DRAFT & FLAME RETENTION SERIES

- CRN certified & A.S.M.E. construction
- Horizontal tube wet leg design for maximum heat transfer
- Large tankless coils supply ample domestic hot water
- Accessible front & rear tube sheets
- Spiral flue baffles for best efficiency
- Front clean out is fully gasketed and pressure sealed with high temperature insulation, providing ease of servicing and replacement
- Sealed pyrex observation port
- Boilers sealed to eliminate pressurized flue products from leaking
- High speed burner with flame retention head provides smokeless combustion
- Designed for steam or water systems
- Flush mounted jacket casing is individually cartoned, to prevent damage during installation, and screw holes are punched for easy installation
- Four alternative drain ports provide installation flexibility, and abundant blow down capacity
- Aquastat strategically located between water heater coils to provide optimum and accurate sensing of domestic water

The reliability that NY Thermal customers know and trust is epitomized with the New Yorker "FR" and "FD" series of oil-fired boilers.

With over 25 years of experience, NY Thermal is acknowledged as a leader in boiler and furnace research and development; a pioneer in creating the most advanced and efficient heating equipment. We won't bring a new product to you until it has passed the industry's most rigorous performance and quality testing.

Our customer service hotline and extended warranties maintain our commitment to you. You can count on years of trouble-free, safe and comfortable heat. Only from NY Thermal.



	FLAME RETENTION SERIES									FORCED DRAFT SERIES			
MODEL	FR 100	FR 132	FR 158	FR 184	FR 198	FR 252	FR 324	FR 396	FR 453	FD 504	FD 648	FD 792	FD 1008
GROSS OUTPUT MBH (HW)	97.6 (28.6)	143.5 (42)	172.2 (50.5)	200.9 (58.9)	229.6 (67.3)	258.3 (75.7)	367.4 (107.7)	459.2 (134.6)	482.2 (141.3)	551 (161.5)	688.8 (201.9)	861 (255.3)	1102 (323)
BOILER HP GROSS (HP)	2.9	4.2	5.1	6	6.8	7.7	11	13.7	14.4	16.4	20.5	25.7	32.9
NET OUTPUT MBH-W (HW-HR)	84.9 (24.9)	124.8 (36.6)	149.6 (43.8)	174.7 (51.2)	199.7 (58.5)	224.6 (65.8)	319.4 (93.6)	399.3 (117)	419.3 (122.9)	479.2 (140.5)	599 (163.8)	748.7 (219.5)	958.3 (281)
NET OUTPUT MBH-S (HW-HR)	73.4 (21.5)	107.9 (31.6)	129.5 (38)	151.1 (44.3)	172.6 (50.6)	194.2 (56.9)	276.2 (81)	345.3 (101.2)	362.5 (106.2)	414.3 (121.4)	517.9 (151.8)	647.4 (189.7)	828.6 (242.9)
FIRING RATE U.S. GPH (1/S) (L/H)	.85 (3.21)	1.25 (4.73)	1.50 (5.67)	1.75 (6.62)	2.00 (7.57)	2.25 (8.51)	3.20 (12.11)	4.00 (15.1)	4.20 (15.89)	4.80 (18.18)	6.00 (22.7)	7.50 (28.4)	9.60 (36.36)
NOZZLE SPEC.	80"s at 100 PSI	80"s at 100 PSI	80"s at 100 PSI	80"s at 100 PSI	80"s at 100 PSI	80"s at 100 PSI	70"s at 150 PSI	80"s at 100 PSI	70"s at 150 PSI	70"s at 150 PSI	70"s at 150 PSI	45" H at 150 PSI	45" H at 150 PSI
STACK DIA INS. (CM)	6 (15.2)	7 (17.8)	7 (17.8)	7 (17.8)	7 (17.8)	7 (17.8)	9 (22.9)	9 (22.9)	9 (22.9)	9 (22.9)	9 (22.9)	12 (30.5)	12 (30.5)
SUPPLY SIZE WATER INS. (CM)	1 1/4 (3.2)	2 (5)	2 (5)	2 (5)	2 (5)	2 (5)	2 1/2 (6.4)	2 1/2 (6.4)	2 1/2 (6.4)	2 1/2 (6.4)	2 1/2 (6.4)	4 (10.2)	4 (10.2)
RETURN SIZE WATER INS. (CM)	1 1/4 (3.2)	2 (5)	2 (5)	2 (5)	2 (5)	2 (5)	2 1/2 (6.4)	2 1/2 (6.4)	2 1/2 (6.4)	2 1/2 (6.4)	2 1/2 (6.4)	4 (10.2)	4 (10.2)
SUPPLY SIZE STEAM INS. (CM)		3 (7.6)	3 (7.6)	3 (7.6)	3 (7.6)	3 (7.6)	4 (10.2)	4 (10.2)	4 (10.2)	4 (10.2)	4 (10.2)	4 (10.2)	4 (10.2)
RETURN SIZE STEAM INS. (CM)		2 (5)	2 (5)	2 (5)	2 (5)	2 (5)	3 (7.6)	3 (7.6)	3 (7.6)	3 (7.6)	3 (7.6)	4 10.2	4 10.2
CHIMNEY SIZE INS. (CM)	8X8 (20.3X20.3)	8X8 (20.3X20.3)	8X8 (20.3X20.3)	8X8 (20.3X20.3)	8X8 (20.3X20.3)	8X12 (20.3X30.5)	8X12 (20.3X30.5)	12X12 (30.5X30.5)	12X12 (30.5X30.5)	18X18 (45X45)	18X18 (45X45)	20X20 (50.7X50.7)	20X20 (50.7X50.7)
HEATING SURFACE SQ. FT. (M)	21 (1.95)	25 (2.31)	25 (2.31)	25 (2.31)	30 (2.78)	30 (2.78)	45 (4.17)	51 (4.73)	58.27 (5.4)	58.27 (5.4)	58.27 (5.4)	72.41 (6.7)	93.52 (8.7)
BOILER WATER CAP. GAL.(L)	26 (118.19)	46 (209.11)	46 (209.11)	46 (209.11)	53 (240.93)	53 (240.93)	72 (327.31)	93 (422.77)	105 (477.33)	105 (477.3)	105 (477.3)	120 (545.5)	160 (727.3)
WEIGHT APPROX. LBS. (KG)	485 (220.4)	770 (350)	770 (350)	770 (350)	845 (384)	845 (384)	1200 (545.5)	1450 (659)	1600 (727.3)	1600 (727.3)	1600 (727.3)	1800 (818.2)	2200 (1000)

Because we never stop improving the durability and performance of our quality line of products, we reserve the right to change specifications without prior notice.

For more information, please contact:



30 Stonegate Drive
 Saint John, New Brunswick
 E2H 0A4 Canada
 Tel: 506-657-6000
 Toll-free: 800-688-2575
 Fax: 506-432-1135

In Toronto:
 Tel: 416-812-7205
 Fax: 905-420-0721

For more than 25 years, the FR-FD series of horizontal oil-fired boilers has been the product of choice for installers and engineers, due to its excellent reputation for performance and reliability.

When you require the best, don't settle for anything less than NY Thermal Corporation.

Distributor: